

*'Let all that you do,
be done in love'*
1 Corinthians 16:14



Newsletter – November 2025
Head of School – Mrs S Hallsworth

Living Our Values Everyday


Well, it has been a very busy start to the half term both in and out of the classrooms and there is plenty more to come. As the term progresses, we will be starting more and more of our Christmas themed activities and events such as nativities, church visits, parties and Christmas Jumper days. More details will be on the way soon about everything festive in school.

One very important thing to note for the coming weeks, is that the recreation ground path beside school will be shut for at least a week from Monday 24th November. During this week we will be opening the gates at the side of school to allow access to that side of the site. The car park nearest the kitchen will be closed to staff vehicles from 8.30am and the side gates will then be opened at the usual time. Parents and children will also be able to exit school this way at the end of the day, with the car park again closed to ensure safety for all.

As always, if you have any questions about anything please get in touch.

Communication

The chart below gives you key information regarding who to contact about the different aspects of school and how you can contact them should you need to:

Where to go?				
School Website	School Office	Class Teachers	SENDCOs	Head of School
Information about: <ul style="list-style-type: none"> Term dates Key dates School policies Newsletters Key people in school Early Help Safeguarding Curriculum Statutory school information PTA information Governor information www.scargill.derbyshire.sch.uk	Information about: <ul style="list-style-type: none"> Admissions Pupil illness/absence Medicines in school Medical conditions Changes to contact details School meals Payments Afterschool clubs information info@scargill.derbyshire.sch.uk	For questions or concerns about: <ul style="list-style-type: none"> Homework Achievement Friendships Behaviour Lessons Family matters which be affecting your child Bullying concerns Trips/residentials Teachers are available on the playground at the end of the school day or you can email the department email addresses below.	For questions or concerns about: <ul style="list-style-type: none"> Special Educational Needs or Disabilities Issues or advice regarding SEND Miss Clutterbuck is SENDCO for EYFS & KS1 Mrs Hallsworth is SENDCO for KS2 You can speak to them on the playground at the start/end of the day, phone or email SENCO@scargill.derbyshire.sch.uk	Information about: <ul style="list-style-type: none"> Safeguarding Sustained issues which the class teacher has been unable to resolve If the Head of School is unavailable, the Deputy Head will respond to any concerns. You can speak to the Senior Leadership Team on the playground at the start/end of the day, phone or email info@scargill.derbyshire.sch.uk
www.scargill.derbyshire.sch.uk email: info@scargill.derbyshire.sch.uk Telephone: 0115 9320005	EYFS@scargill.derbyshire.sch.uk Y1-2Department@scargill.derbyshire.sch.uk Y3-4Department@scargill.derbyshire.sch.uk Y5-6Department@scargill.derbyshire.sch.uk		 Twitter @scargill_school	

Learning in Action

Some pictures of our Badger and Rabbit children in their learning
Living Our Values Everyday



School Ready!

As we have mentioned before in our newsletters, our uniform policy is very clear that we do not expect rucksacks to be brought into school. There is a very practical reason for this and that is space. Now that the colder weather has arrived and all of the children have their winter coats, the pegs can not handle a rucksack, coat and PE bag. They can accommodate a drawstring PE bag, Flat book bag and a coat. What we find with rucksacks is that they cause the coats to fall off the pegs and we end up with those coats lying on the floor all day and causing a trip hazard.

Details of uniform expectations can be found here in our policy:

<https://scargill.eschools.co.uk/web/policies/638006>



Medical Needs and Contact Details

If your child has any changes to their medical needs or contact details, please ensure you inform our school office.

If your child requires a special medical diet, for example they have a food allergy, you must complete Derbyshire County Council's medical diet portal

This is the link to our website with more information and a link to the special medical diet portal for DCC.

https://www.scargill.derbyshire.sch.uk/web/school_dinners/523933

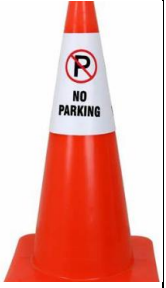
Sporting News

Scargill have had a hugely successful first half term. We have the girls football team through to the county finals, along with the Y3/4 Girls and Y5/6 Boys Cross Country. The Y5/6 Boy's football team performed admirably and only conceded 2 goals, but unfortunately drawing a few to many games to progress. In Y3/4, the football team won their tournament, becoming Erewash champions. Well done to all children who have taken part and thank you to any parents who have assisted with transport and support.



Parking

Please can we ask that parents show respect and consideration to our neighbours when parking near school and not block drives and leave engines running unnecessarily. There are cars parking/pulling in on the zigzags on Hallam Way. I have asked our PCSO to monitor this. The markings are there to help keep all our children safe. It is extremely dangerous when people park illegally.



Please also note that parents should not park in the staff carparks. This includes parents using JAG before/after school club.

Thank you.

Remembrance Events

The school has been heavily involved in the village remembrance events this month. On Saturday 8th November, Mr Attenborough and a group of our children attended the Remembrance Celebratory Afternoon Tea at St Wilfrid's. They joined with members of the community to remember the fallen and did a short presentation. These children repeated their performance to the whole school at 11am on 11th November as we fell silent as a school to show our respects to the victims of war.

We are also proud of how many of our children joined the remembrance parade through the village on Sunday 9th November as part of the various uniformed organisations.



Staffing News

It is with great sadness that we will be saying goodbye to Mrs Birkin at the end of term. She will be leaving to embark on a new challenge at another school. I'm sure the whole school community will miss her greatly, but wish her all the best. We will be in touch with Owls parents shortly to update you on our plans for staffing in January.

Arbor Parent App

As you may now be aware, we have moved over to Arbor for payments for trips etc. From January 2026, we will start to use Arbor for meals, instead of ParentPay. So, if you have credit built up in ParentPay, please try to use this up for the rest of the term. From January, if there are still accounts in credit, we will start refunding any monies back to you. If you are yet to activate your Arbor account, please do so as soon as possible.

Attendance & Absences

Please read the section on our website about school attendance. It includes a copy of our policy, information from Derbyshire County Council as well as advice for parents.

<https://scargill.eschools.co.uk/web/attendance/630553>

It explains clearly for parents everything you need to know. Please can I remind parents that it is your responsibility to inform school if your child is going to be absent. Please ring the school office and leave a message. Punctuality is important too. A reminder that our school day starts at 8.55 a.m. Children should be seated in their classroom ready for the register at this time.

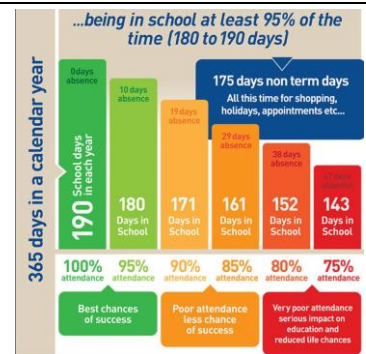
Thank you, parents/carers, for your co-operation in supporting high levels of school attendance and punctuality.

Below is also a reminder of the changes regarding attendance implemented in Sept 2024.

Attendance

"From the first day of term to the last, the small moments in a school day make a real difference to your child.

#AttendanceCounts"



School Absence Procedure:

Parents will be required to contact the school office via telephone (01159320005), in person or by email (info@scargill.derbyshire.sch.uk) before **8.55am** on the first day of their child's absence – they will be expected to provide an explanation for the absence and an estimation of how long the absence will last, e.g. one school day.

The school will always follow up any absences in order to:

- Ascertain the reason for the absence.
- Ensure the proper safeguarding action is being taken.
- Identify whether the absence is authorised or not.
- Identify the correct code to use to enter the data onto the school census system.

If no contact is made by 10.30am, a home visit may be carried out.

If a child has been absent for 3 days and has not been seen by a member of staff, the attendance officer/member of SLT may conduct an unannounced home visit.

Sensory Garden

Our sensory garden is open to the community on Sundays between 10am and 12pm – come along!





NUT ALLERGIES

We have children in school who could have an anaphylactic reaction if exposed to nuts or nut traces. Please only send your children to school with packed lunches that do not contain nuts or products containing nut traces. This includes Nutella and other chocolate spreads/products that contain nut traces or MAY contain nut traces.

Thank you



For more information:

Scargill Church of England Primary School - Before & After-School Provision



Outdoor Classroom Day

The 6th of November marked Outdoor Classroom Day. The children enjoyed taking part in a range of Thrive activities involving the great outdoors, creating wonderful artwork, appreciating nature, and exploring nature-based crafts. Being outdoors is a fantastic way of supporting our wellbeing. Children are spending less time outside than ever before and this can affect their health, wellbeing, and development. Days like this are a great way of showing our children how spending time outside can positively support their wellbeing.

Contacting Teachers

If you would like to talk to us about your child and any concerns you have, please get in touch. In the first instance, please contact your child's class teacher. You can do this by phoning the school office or using the email addresses below for each department.

EYFS@scargill.derbyshire.sch.uk

Y1-2Department@scargill.derbyshire.sch.uk

Y3-4Department@scargill.derbyshire.sch.uk

Y5-6Department@scargill.derbyshire.sch.uk

Where can I find more information?

Collecting Children at the end of the school day

Reception children are dismissed at 3.20pm. The rest of the school (Y1-6) are dismissed at 3.25pm. Please ensure you are ready to greet your child at the correct time.

Parents must please ensure that any older siblings collecting children adhere to the following and that class teachers are informed of any change to the usual arrangement:

Collection of Reception children - Minimum age 16 years.

KS1 & KS2- Minimum age 14 years.

Y5 and Y6 children can walk home independently - please ensure the school office is aware of this

Please keep using our website for additional support and information.

A half-termly newsletter for each department detailing specific aspects of the curriculum that your child will be learning can be found in the Year Groups tab on our website.

Also, follow us on X (Twitter) @scargill_school as we often share helpful information and it gives you an up-to-date view of what is happening in school.

in writing.

We understand that unforeseen circumstances can very occasionally lead to a late pick up. If you are going to be late, please ensure you have informed to school office.

Unfortunately, we are unable to offer child care provision by teaching staff or admin staff after school has ended. If you are unable to make the end of the school day collection time on a regular basis, the JAG after school club (situated in our new hall) could be able to offer your child a place.

[Scargill Church of England Primary School - Before & After-School Provision](#)

TERM DATES - 2025/26

Monday 5th January – Friday 13th February 2026

Monday 23rd February – Friday 27th March 2026

Monday 13th April – Friday 22nd May 2026

Monday 1st June -Thursday 23rd July 2026

BANK HOLIDAYS which don't fall in the school holidays - school closed

Monday 4th May 2026

INSET Days

Thursday 4th & Friday 5th September 2025

Monday 5th January 2026

Friday 22nd May 2026

Monday 29th June 2026

Diary Dates

Autumn Term

Each class will invite parents to come along and join in with a learning activity.

17.11.25 – Road safety week

20.11.25 – Jewish Workshop Y1

24.11.25 – UK Parliament Week

9.12.25 – Reception and KS1 Nativity

10.12.25 - Reception and KS1 Nativity

11.12.25 Reception and KS1 Nativity

14.12.25 – St Wilfrid's Toy Service

Spring Term

W/c 23.3.26 – Edale Y4

24.4.26 – Conkers Y1&2

Summer Term

Each class will invite parents to come along and join in with a learning activity.

W/c 22.6.26 – Y6 Isle of Wight

ST WILFRID'S TOY SERVICE
SUNDAY 14th DECEMBER 2025 at 11.00 a.m



Come and join us.
Everyone welcome

There are children and young teens in our town and villages who will receive nothing at Christmas.
Could you buy an extra gift this year?

Friends from The Arena Church will be at the Toy Service to receive our New Gift donations for distribution at Christmas.

If you wish to donate a New Gift, or money towards one, but can't join us in Church, it may be left at 53 Henley Way, West Hallam or 15 Vincent Avenue, Ilkeston.

Collection may be possible.

WE NEED 24 HOURS ADVANCE NOTICE PLEASE FOR EITHER OPTION

Call Angela 07950 214419 or Lucy on 07740 949225 to arrange

DONATIONS CANNOT BE LEFT AT THE RECTORY

Buggy will be available for transport up Church path