



## Reception Spring Term 1 2023 Newsletter

Last term was a very fun filled and action packed term. I hope you enjoy reading and looking at some of the highlights. The Nativity was a firm favourite for me as the children put so much effort and hard work into learning the songs and their lines. The children have developed and progressed so much in this first full term and for me it has been a pleasure to watch your children develop and learn so much in a short time. I would like to take this opportunity to Thank you for your continued support and wish you all a wonderful, relaxing and enjoyable Christmas with your loved ones.

*Mrs Chisholm*







## **Balance Bike Festival**

This was a great success. For many children it was their first time on a bike and as the bus pulled away there was an excited in take of breath from the children followed by a shriek of excitement and laughter. At the event the children were all really well behaved and joined in with the activities. Many attempted to ride a bike without stabilisers which was fabulous. The whole afternoon was a fun, physical, learning time with lots of new experiences.



## **Diwali**

The children thoroughly enjoyed learning about the Festival of Light. They experienced Bollywood dancing, Indian food, made Rangoli patterns, created Diya lamps using clay and learnt about how Diwali is celebrated.



## **Children In Need**

The children learnt about Children in Need and the purpose of the day. They joined in with the yoga event and began to think about how fortunate they were.



## **Space Week**

After learning about Neil Armstrong, his rocket, what he achieved, the children learnt some simple facts about the moon landing. They created aliens, role played in the space station and investigated moon dust and rocks!



## **Anti Bullying Week**



We used the odd socks as a starting point to explain that just like our socks we are all different and unique. We are all different but all special and therefore we love and care for each other.

We treat others as we want to be treated ourselves.



## **Religions and World Views (R&W)**

As part of our R&W work we have been looking at special times and places. We started by learning about a Christian wedding and role playing it. We then compared it to an Hindu wedding and talked about the similarities and differences.



## **Planting Bulbs**

All of the children have planted some bulbs by the trees near the EYFS outdoor area and we are looking forward to them growing and looking lovely in the spring. The children enjoyed digging and investigating the different shaped and sized bulbs.





## Singing at Tesco

The children walked to Tesco in West Hallam and sang some Christmas songs and songs from their Nativity. It was lovely community event and Tesco treated them afterwards to a drink and biscuits.



## Curriculum- What will the children be learning this term?

Below is a brief overview of what we will be learning this term. Our Topic is all about Environments and Habitats. We have lots of interesting and exciting activities planned for the children.

Week	Topic	Phonics	Maths	Literacy	Other
1 8/1/24	Artic/Antarctic— Why don't pen- guins get cold?	al ee lgh oa	Counting 9 and 10	Report Six Dinner Sid	
2 15/1/24	Forest/ woodlands— If you go into the woods today can you survive?	oo oo ar or	Comparing groups	Report Six Dinner Sid	
3 22/1/24	Jungle—What makes the rum- ble in the jungle?	ur ow oi ear	Combine 2 groups addi- tion	Rhyme Rumble in the Jungle	
4 29/1/24	Safari—What do your binoculars spy?	air er words with dou- ble letters: dd mm tt bb rr gg pp ff	Length, height & distance	Rhyme Rumble in the jungle	
5 5/2/24	Under the sea— What will you see?	longer words	Weight	Dialogue Handa's Surprise	Chinese New year 9th Feb
6 12/2/24	Farm—Where does our food come from?	Assess and Review	Assess and Review	Dialogue Handa's Surprise	12th and 15th parents evening

## Curriculum- What will the children be learning this term?

### Communication and Language:

The children will be introduced to new words related to their learning. They will develop their listening skills and be able to respond relevantly. They will be encouraged to ask questions, clarify their understanding and express their ideas and feelings using full sentences.

Some of the language we will focus on: storytelling, once upon a time, past, present, connectives, words related to our topics.

How to support your child at home: Encourage your child to answer questions in full sentences rather than single words. Talk about what we have been learning about and ask the children to explain words, such as environment, habitat, forest, jungle, woodland etc.

### Personal, Social and Emotional Development:

Through our Jigsaw PSHE programme and Thrive the children will be learning about Dreams and Goals, they will look at setting goals and challenges for themselves. We will discuss how to tackle a challenge, how to persevere and overcome obstacles in order to achieve our goals. We will continue to look at our rights and responsibilities and also begin to look at Rule of Law.

How to support your child at home:

Talk to your child about rules and tolerance. Discuss how we all have to follow rules like school rules, rules when driving the car, rules when going in shops etc. Talk about how we have respect for others and why it is important.

### Physical Development:

We will continue to focus on using scissors correctly and cutting out a range of different shapes. The children will be encouraged to correctly form letters especially with ascender and descender letters. In PE, the children will be following the 'Complete PE' Scheme and outdoors they will work on developing throwing and rolling skills. Indoors they will look at moving in different ways, looking at types of movement, shapes and using apparatus.

How to support your child at home: Encourage your child to use scissors to cut lines or shapes. Please ask via email if you require any scissor skill support sheets. Encourage your child to hold their pencil in a tripod grip and practise their handwriting.

## **Maths:**

Through the Power Maths scheme the children will work with numbers to 10, they will learn addition skills and continue to develop their knowledge of number bonds. We will also introduce weight, length, height and distance.

**How to support your child at home:** Recall number bonds to 10, begin simple addition and record it. Talk about height, length, weight and distance. Practise correctly forming numbers and revisit naming both 2d and 3d shapes.

## **Literacy:**

Through our Talk4Writing scheme the children will continue to develop their knowledge of story structures and recall the sequence, drawing on deeper understanding of settings and characters. They will learn the story and then learn parts in detail so that they can verbally retell the story. They will begin to understand story structure, characters, settings and how it can be changed to make a new story.

Phonics—We will continue to follow our 'Little Wandle' scheme and recap sounds, whilst introducing new sounds. We will develop their segmenting and blending skills so that all children are reading word books

**How to support your child at home:**

Practise the phonic flash cards sent home, blend words together like chip / shin / fish / hill. etc and encourage your child to write them independently whilst forming the letters correctly. Use the phonic assessment sheet sent home to help support your child with any missing gaps. A daily read and writing simple sentences with finger spaces will also really help. Sentences like: A black sheep on a hill / The dad has a red bag / Ducks go quack.

## **Understanding the World:**

Our topic this term is 'Environments and Habitats. We will be looking at different environments and habitats and making comparisons. We will identify the similarities and differences between them, look at what animals may live there, how we can look after the environment and what some environments are like in other countries.

**How to support your child at home:**

Visit a woodland area, look at the world around them, talk about the leaves, the trees, the branches, look for sounds, animals and discuss where the animals might live. Visit the library and look in books at different environments around the world like a rainforest, Antarctica etc

Can you find a rabbit warren? A badger set? A birds nest ?etc. Shipley Country park, Swan Lake or Mapperley reservoir are great free places to visit to see different habitats.

## Expressive Art and Design:

The focus for this term's art will be painting, the children will use different tools and brushes, they will learn how to colour mix and blend colours. They will create self portraits and learn how to wipe brushes so that paint doesn't drip.

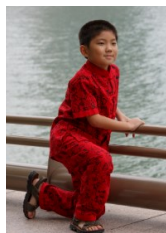
In music they will build up a repertoire of songs and nursery rhymes, they will explore sounds and how they can be changed,

### How to support your child at home:

Allow your child to paint at home and learn what colours have to be mixed together to create a new colour. Sing songs together and dance in time to the music. Be as creative as you can be.

## Chinese New Year

On Friday 9th February 2024, we invite children to come to school dressed in traditional Chinese costume or wearing red. We will be learning about Chinese new year, the traditions, the celebrations and we will even taste some Chinese food.



## People who help us:

We would like to have some people come into school to talk to the children about their jobs especially if it is a job where you help other people, ie: Doctor, nurse, dentist, vet, midwife, fire-fighter, postal worker, bus driver, plumber etc. Equally, if you have a job that you think the children would like to hear about, please let us know. It would be great if we had a list of parents willing to come in as our mystery visitor to talk about their job and perhaps show their uniform or some tools, artefacts etc. We want to keep the visitor a surprise to the children so please don't tell them that you might be coming.



### Cooler Weather

Please make sure your child has a hat and gloves in school each day. The ski type gloves are ideal as they are often waterproof and keep little fingers warm when learning outdoors.



### Non– uniform Days

When your child comes to school in non uniform please can we ask that you consider the ease of your child getting to the toilet in their clothes, onesies are really tricky for them. Also please no laces unless your child can tie them independently as it is really difficult when we have to keep stopping teaching to tie laces. They are easy when you only have one or two children but when we have unit of children it is really challenging.

Thank you in advance.



### **NUT ALLERGIES**

We have children in school who could have an anaphylactic reaction if exposed to nuts or nut traces. Please only send your child to school with packed lunches that do not contain nuts or products containing nut traces. This includes Nuttella and other chocolate spreads/ products that contain nut traces or MAY contain nut traces.

### Important Dates

Start of term— Monday 9th January 2024

Chinese New Year dress up—Friday 9th  
February 2024

Parents Evening— 13th and 16th Feb 2024

End of Term—Thursday 15th Feb 2024

### Communication

[eyfs@scargill.derbyshire.sch.uk](mailto:eyfs@scargill.derbyshire.sch.uk)

The newsletter will be in the Reception window and it will be on the website under year groups—Reception

### Reminders

At collection time please only wave to your child once they are at the front of the queue so that we send the children to the correct parent. Safeguarding your children is our priority.

If your child leaves something in school, please wait until we have dismissed all children. This is to prevent children crossing on the steps and struggling to get back into school when there is a queue.